

PACKLINE MACHINES

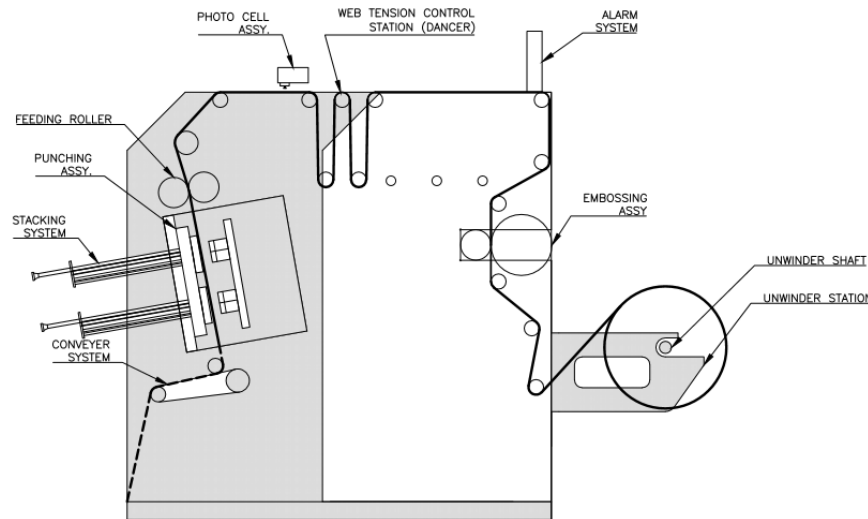


Fully Automatic Punching Machine



TECHNICAL FEATURES

MODEL NAME	LPM-400 SUPER
MAXIMUM CUTTING AREA (mm)	400 x 350
MACHINE DIMENSION- LxBxW (mm)	1975 x 1475 x 1750
MAXIMUM WEB WIDTH (mm)	400
MAXIMUM REEL DIAMETER (mm)	600
INSIDE REEL CORE DIAMETER (mm)	75
MATERIAL TO BE HANDLED	38-120 micron Al Foil/ Printed or Unprinted paper/ paper board laminated with Pet. /BOPP/Poly. GSM Range- 30 to 400 GSM.
MAXIMUM DIE CUTTING CYCLE	200 STROKES/MINUTE
TOLERANCE BETWEEN PRINTING AND DIE CUTTING	+/- 0.3 mm
CONNECTED LOAD (MOTIVE)	5.75 K.W.
VOLTAGE	415 V - 3 Phase 50 Cycles
WEIGHT	1900 Kgs
PNEUMATIC AIR	4 Bar.



PACKLINE MACHINES

Address : F-610, Masoori Gulawati Road Indl. Area, Hapur Ghaziabad (U.P.) INDIA
 Mob. : +91-9999013885, +91-7838085989, +91-9811767686 Fax : +91-120-4564118
 E-mail : info@packlinemachine.com Website: www.packlinemachine.com

The Machine design advantages excel it far from the traditional/conventional technologies such as Power Press, etc. Some of the Categories include:

Digital Counting and Stacking Device - The machine will automatically count the pieces it has punched and will give them out as a bunch on the stacking assembly once the target pieces are achieved which the user has fed on the machine. This Feature solves the problem of collecting pieces manually when the two faces of the seal are different such one is printed and other is blank. The Stacking systems are part of punching tools and are made specifically as per cut piece design and number of cavities.

In-Built Embossing station /Nip Roller Assembly (Either as a Standard) - The user can choose whether to emboss on the material web prior punching operation or simply unwind material. The option of availing both is also available.

Fine Edge Cutting and accuracy check - The machine has a photocell assembly to ensure the accuracy within the 0.3 mm tolerance printing registration as per eye mark. Optional Edge/Line guide attachments are also available.

Durable punching tools - The machine's punching tool can punch up to 10 million pieces before it needs a grinding cut and the tool can be grinded up to 65 to 80 times depending on the environment, usage and other factors.

Minimum wastage - The machine punches directly roll to piece form which ensures high accuracy and minimum wastage on the material up to 12 -15% depending on the sizes and shape etc.

The punching die - It consists of multiple moulds which enable the punching out of several labels per stroke.

